

MONTHLY MEMBERSHIP PROGRESS REPORT

LOCATION OHIO

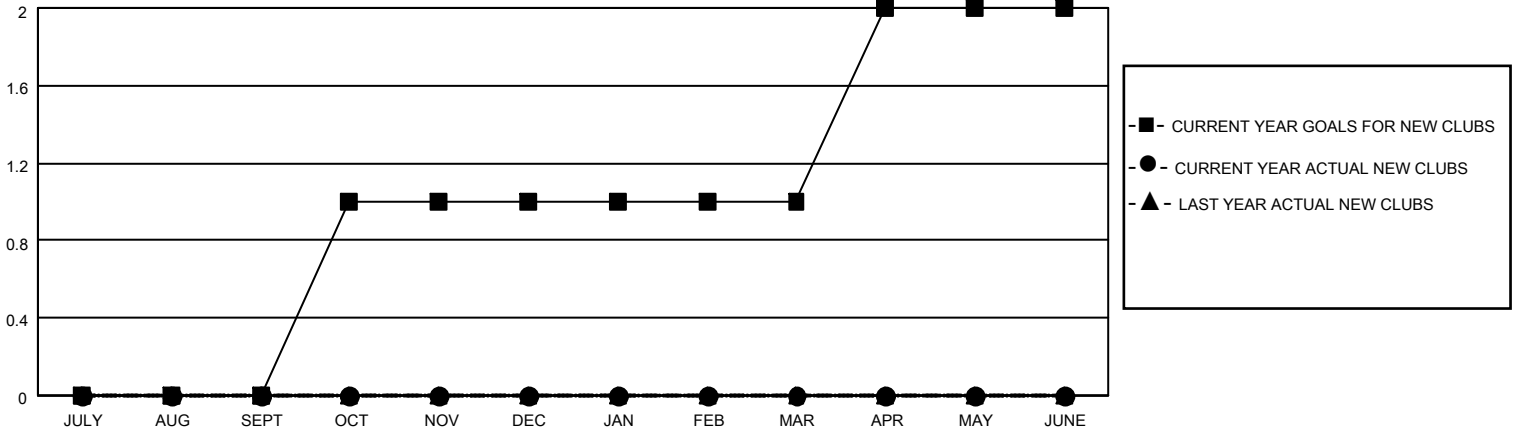
District 13 OH3

Results as of: 10/31/2021

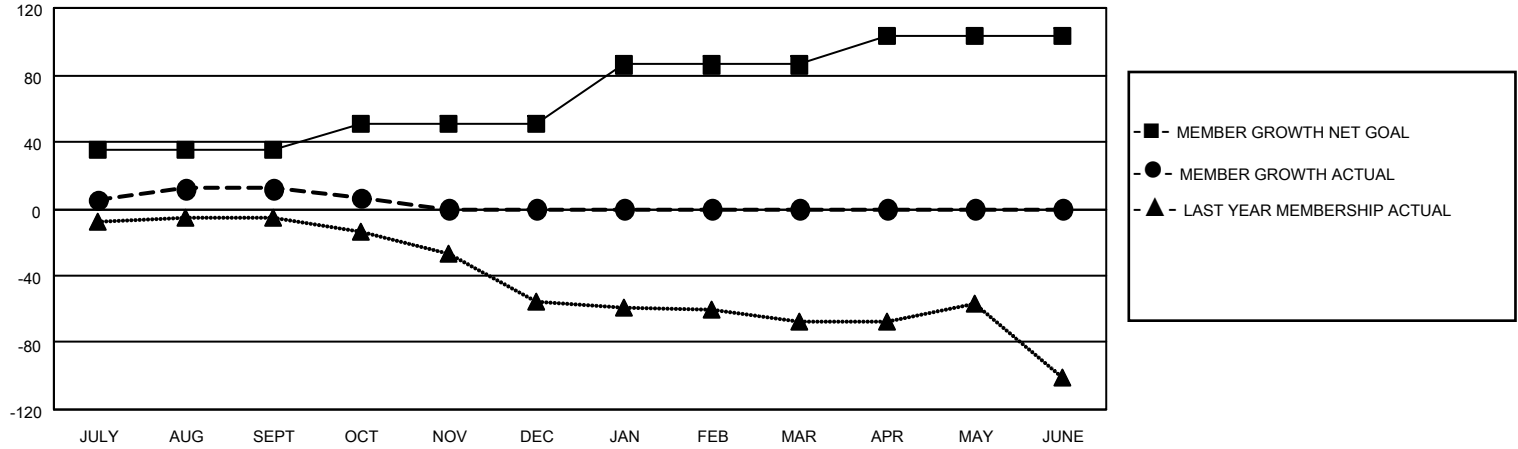
Clubs			
RESULTS FOR 2021-2022			
QUARTER	NEW CLUB GOAL	NEW CLUBS	DROPPED CLUBS
JULY/AUG/SEPT	0	0	0
OCT/NOV/DEC	1	0	0
JAN/FEB/MAR	0	0	0
APR/MAY/JUNE	1	0	0

Members			
RESULTS FOR 2021-2022			
QUARTER	MEMBER GROWTH NET GOAL	MEMBER GROWTH ACTUAL	DROPPED MEMBERS ACTUAL (including transfers)
JULY/AUG/SEPT	35	44	25
OCT/NOV/DEC	16	6	11
JAN/FEB/MAR	35	0	0
APR/MAY/JUNE	17	0	0

GOALS AND ACTUAL NEW CLUBS CUMULATIVE



GOALS AND ACTUAL MEMBERS CUMULATIVE



DROPPED CLUBS: 0	
DROPPED MEMBERS	
DECEASED	11
CLUB CANCELLED	0
OTHER	25
TOTAL	36

17 CLUBS OF 53 ADDED 1 OR MORE NEW MEMBERS

[CLICK HERE FOR CUMULATIVE MEMBERSHIP DATA](#)

<u>GENDER DISTRIBUTION</u>	
MALE	929 (67.37%)
FEMALE	450 (32.63%)
NON BINARY	0 (0.00%)
PREFER NOT TO ANSWER	0 (0.00%)
<hr/>	
TOTAL FAMILY UNIT MEMBERS	300
<hr/>	
FAMILY MEMBERS PAYING HALF DUES	154